

Scrutiny Annual Report 2013/14



Scrutiny provides Councillors, not part of Stockton Council's decision-making Cabinet, the opportunity to review decisions, policies and performance that affect the Borough. Scrutiny is a Councillor-led process which helps to ensure that the Council's services and policies meet the needs of local people according to the Council's own aims and standards.

Contents	Page
Foreword.....	3
Key Achievements.....	4
Overview and Scrutiny Committees.....	6
Adult Services and Health.....	7
Environment.....	9
Regeneration and Transport.....	10
Arts, Leisure and Culture.....	10
Children and Young People.....	11
Housing and Community Safety.....	12
Corporate and Social Inclusion.....	13
Regional and Sub-Regional Health Scrutiny.....	14
Police and Crime Panel.....	15
Work Programme 2014-15.....	16
Overview and Scrutiny Team.....	16

Foreword

[To be inserted]



Key Achievements 2013-14

Overview and Scrutiny Review Activity

The following in-depth evidence based reviews have been completed and been reported to Cabinet.

A **Task and Finish Review of Community Safety and Security Services** resolved that the collaboration between Tees Valley Authorities regarding the provision of CCTV / community alarm services infrastructure be supported, the development of 'Flare' will enable members of the public access to review and check progress of their cases in the first instance be supported, and Vela (social housing provider) review the impact of the current review of the concierge services within 12 months following its introduction.

Efficiency, Improvement and Transformation (EIT) Review of Adult Mental Health Social Care Services concluded that alternative options for rehabilitation, respite and short break services, be developed to enable a more flexible approach to service provision and achieve better value for money.

Recognising the importance of involving local people in developing services, the review recommended that service users and carers should be involved in the design of new services proposed and supported throughout the transition period whilst providers including the voluntary sector should be engaged and supported to develop services that meet the assessed needs of service users and attract personal budgets. The provision of information, advice, and signposting services for service users was also a key issue.

The **Review of North East Procurement Organisation** supported and endorsed the decision made by Leaders and Mayors and the NEPO Joint Committee to create a smaller and re-focused NEPO with an amended management structure given the changed accountability arrangements having reviewed the areas of external third party expenditure that should be procured at a regional level.

A **Scrutiny Review of Housing Providers** has allowed for further monitoring of the promises given by Tristar Homes at the time of Large Scale Stock Transfer of Stockton Council housing although findings showed a positive result for the decision to transfer the properties. Work will also be undertaken to improve the communication arrangements between Councillors and all social housing providers.

For the **Scrutiny Review of Demographic Information** work will now be undertaken on data sharing protocols to ensure the effective sharing of data across the Council and also possibly with partners with a toolkit developed (in line with the introduction of the new Council Plan structure) for use throughout the Council by officers to provide the data often required for funding bids and thereby make the Council more successful.

Following the **Scrutiny Review of Employment and Education** the Council will work with local businesses and employers, schools and post 16 education and training providers to develop an action plan to deliver greater interaction between schools/ colleges and local business, promote awareness of the job market, help young people remain in education and training whilst providing more and varied opportunities for work experience. Funding avenues will be pursued in order to deliver these objectives.

The **Scrutiny Review of Welfare Reform and Financial Inclusion** praised the joint working across Council and partner agencies (including third sector and Registered Providers) to mitigate the effects of welfare changes and support residents in future phases of reform. It is however recognised that further scrutiny work should take place during 2014-15 to continue

to review the impact of welfare reform. This phase of work should include particular reference to Universal Credit including fraud investigation, food poverty, advice and information, and the local housing market. Members also wanted to improve the information and advice given to help financial inclusion.

A **Scrutiny Review of Child Poverty** has supported and encouraged the shift of resources from reaction to prevention and early intervention, in line with the work of the Health and Wellbeing Board and as part of the Council's strategic approach and financial strategy. In addition support is given to the implementation plan of the Early Help Strategy, to ensure Early Help services (including mental health and emotional health services) are aligned and co-ordinated. Stockton Schools will be encouraged to 'poverty proof' the school day to help to reduce the impact of child poverty.

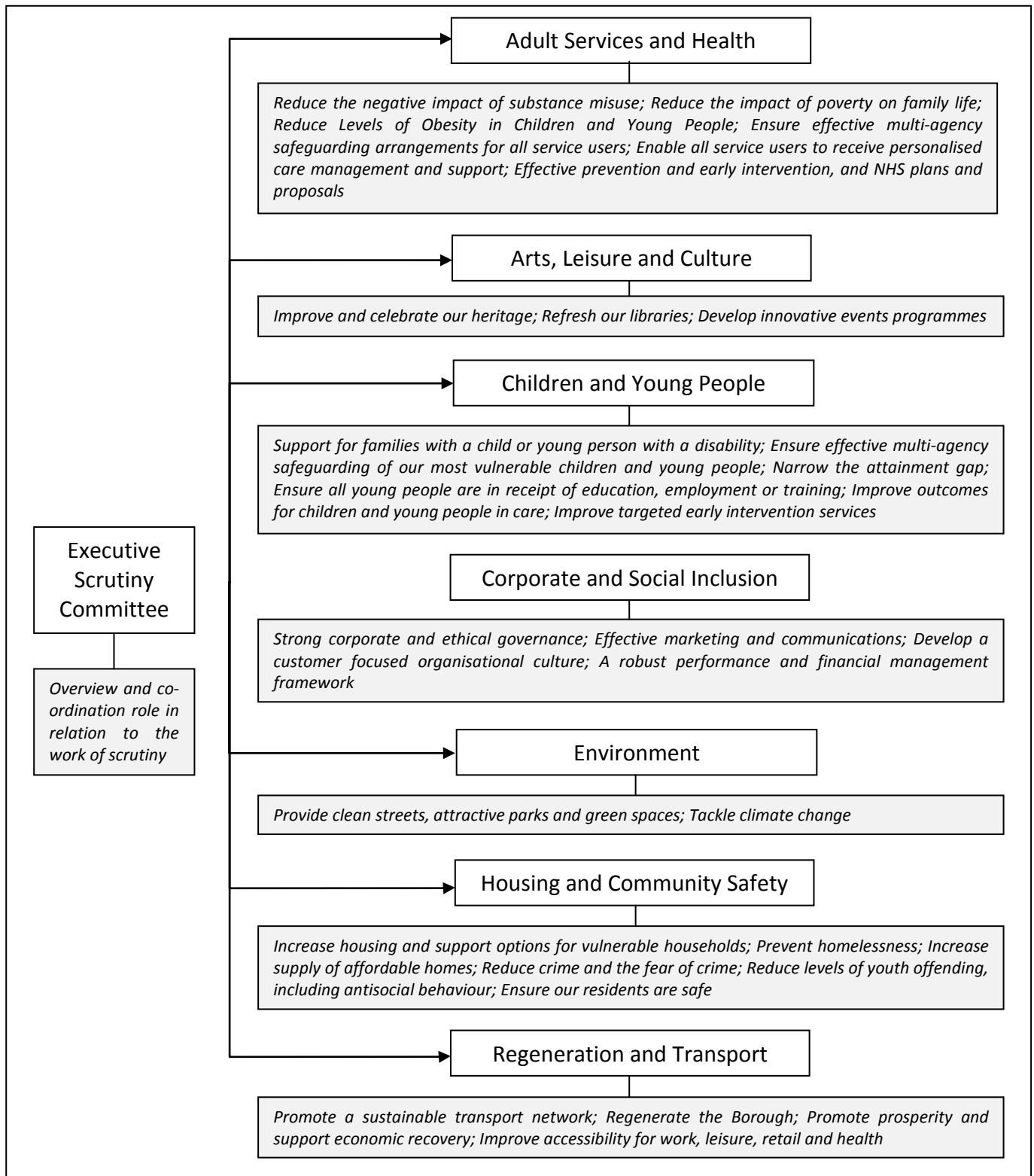
Another major piece of work was an investigation into **access to GP, urgent and emergency care**. Members were initially concerned with reports about difficulty accessing GPs in the parts of the Borough. However, as the work took place against the backdrop of intense national interest in the performance of Accident and Emergency, and in the wake of the challenging winter faced by the regional NHS during 2012-13, the Adult Services and Health Select Committee took the opportunity to investigate the local urgent and emergency care system.

The review found that demand on GPs, urgent and emergency care continues to increase, and it was more important than ever to make the most of the available resources.

All of the Committees' final reports can be found at www.stockton.gov.uk

Overview and Scrutiny Committees

The Council's Overview and Scrutiny Committees (below) are aligned to the areas of Cabinet responsibility and key priority themes of the Council Plan 2013-14 which provide the overall ambitions of the Council in the context of organisational, financial and national policy change. It identifies what the Council is aspiring to achieve in terms of outcomes for people who live, learn, work and visit the Borough and the key activities required.



Select Committee pages

Adult Services and Health Select Committee

This Committee is the Council's designated Health Scrutiny Committee and reviews NHS services and proposals for services change

The Committee conducted an in depth **review of the Council's adult mental health social care services** in order to identify efficiencies and improvements. These included: day services, rehabilitation, respite, community support, user and carer involvement, usage of personal budgets, and commissioned residential 24 hour care.

The Committee visited services provided at Ware Street, 70 Norton Road, and the commissioned residential care at the Edwardian Home on Yarm Road where Members were able to talk to staff and service users about the provision of services.

The process involved widespread consultation with service users, carers and families, and interested parties. The Committee concluded that alternative options for rehabilitation, respite and short break services, be developed to enable a more flexible approach to service provision and achieve better value for money. These services should in future have more focus on recovery and greater involvement for users in the community.

Members believe that the review proposals will lead to more personalised, flexible and modernised services, in line with the latest good practice. Community Bridge Building (CBB) was already in place following the Committee's Learning Disability review. CBB is designed to provide initial support to service users to have greater confidence when accessing everyday services in the community including leisure and employment opportunities, and the review recommended that it be extended to mental health service users.

The Committee was very conscious that any changes to services could lead to a period of uncertainty, and service users would need to be supported through the transition period.

The review recommended that service users and carers should be involved in the design of new services proposed and supported throughout the transition period, whilst providers including the voluntary sector should be engaged and supported to develop services that meet the assessed needs of service users and attract personal budgets. The provision of information, advice, and signposting services for service users was also a key issue.

The early progress updates have been very positive and some service users have successfully found work placements and others have accessed social groups in the community.

Another major piece of work was an investigation into **access to GP, urgent and emergency care**. Members were initially concerned with reports about difficulty accessing GPs in the parts of the Borough. However, as the work took place against the backdrop of intense national interest in the performance of Accident and Emergency, and in the wake of the challenging winter faced by the regional NHS during 2012-13, the Committee took the opportunity to investigate the local urgent and emergency care system.

The Committee heard from a variety of organisations reflecting the complexity of the issues involved, including NHS England, local Practices and the Clinical Commissioning Group (CCG). This piece of work was the first in depth piece of work undertaken since the changes to the structure of the NHS in April 2013, and enabled Members to engage with a range of new partners.

The review found that demand on GPs, urgent and emergency care continues to increase, and it was more important than ever to make the most of the available resources.

There are many options for urgent health care and it can be confusing for people to decide where to go. The system must be made as simple as possible to navigate.

The Committee made recommendations which were endorsed by the Council's Cabinet to:

- Better monitor local GP patient registration and improve appointment processes
- Increase the monitoring of local ambulance services and revise the funding arrangements
- Increase publicity for NHS111 and more guidance for the public to help people use the 'right service at the right time'
- Make the most of the services available including pharmacies.

Other Health Scrutiny Work

Members of the Committee were heavily involved in reviewing proposals to centralise **critical care and emergency medicine** at the North Tees and Hartlepool NHS Foundation Trust. This was a major change involving the shift of c. 100 acute medical beds and 4 critical care beds from Hospital at Hartlepool to North Tees in order to address concerns about the clinical quality and sustainability of the services at Hartlepool. Due to Hartlepool Hospital's development as a centre for much of the Trust's planned (or 'elective') care, many Stockton residents will continue to receive care at Hartlepool Hospital.

A statutory Joint Committee with Hartlepool and Durham Councils was set up to consider the proposals alongside the public consultation. The Joint Committee raised issues around transport and this was a key issue which the Trust and CCG pledged to address. Stockton's Council contributed to a consultation response which was considered by the CCGs that made the final decision.

The proposals were approved and Members have since been involved in a joint oversight group which involved representatives from the other Council's, Healthwatch, the CCG and Trust. All partners agreed that this was a positive move and created a forum for initial monitoring of the implementation and to raise any issues.

Stockton's Committee also considered the proposed relocation of physiotherapy and occupational therapy service for patients with long term neurological conditions from North Tees to Billingham Health Centre. The Health Centre had been recently refurbished and the proposal was in line with the overall strategy of increasing the amount of care provided in the community where appropriate.



The **NHS Quality Account** process is a key method for local stakeholders to review the quality of local services and each Foundation Trust is required to produce an annual version. Stockton's Committee has continued its approach of working closely with North Tees

Foundation Trust in order to review its performance information and comment on its priorities for the quality of its services, specifically relating to patient safety, clinical effectiveness, and patient experience.

Across the England, **local Healthwatch** organisations have been set up to provide the community voice in local health and social care services. As well as providing an advice and information service for the public, Healthwatch members are able to investigate local health and care services, and consult local people for their views.

The Committee has been updated with the progress of the new Healthwatch Stockton and will continue to work closely with them for the benefit of local residents, ensuring that work programmes are complementary.



Environment Select Committee

A **Task and Finish Review of Community Safety and Security Services** considered evidence regarding performance of the services, including corporately collected data and Crime Statistics, while also examining the results of various customer feedback and resident surveys that have previously been carried out.

Customer feedback showed that the service worked well to ensure the community feel safe and any issues reported are dealt with effectively. Performance data endorsed this, showed that reporting systems were in place to highlight any issues as they arose and crime rates were lower than other Tees Valley Local Authority areas and national averages for all but criminal damage.

The Committee noted the commitment to a multi-agency and victim focussed approach to community safety. Services work collaboratively with other Authorities and have put in place support mechanisms for victims and potential victims of anti-social behaviour and crime. The recommendations therefore supported the continuation and development of this approach. There was concern with the impact that the possible changes to the concierge service would have on residents and the Committee have therefore asked for this to be reviewed within 12 months of the changes, to ensure any issues are raised.

The Committee then embarked on a **review of housing providers** in the borough to determine the performance of Erimus Housing and Tristar Homes Limited following Stockton Council's stock transfer of its properties specifically in relation to 'promises' made to tenants in the pre-ballot offer documents. The impact of the economic climate on the 'promises' made to tenants in the offer documents could also have been a concern that needed to be investigated.

The Committee met the Chief Executives and senior managers of the housing providers as well as undertook site visits to see what changes, if any, were being delivered. Members saw that Erimus and Tristar were utilising their position in the housing sector to deliver the financial investment required to further improve properties, investment unavailable to Stockton Council, so provided positive findings and validated the decision taken to transfer the housing stock.

Work will now be undertaken to improve the communication arrangements between Councillors and all social housing providers.



Regeneration and Transport Select Committee

Stockton Borough is the Tees Valley local authority area with the highest population, something that isn't going to change in the 15 years of the population projection available. The Committee's **Review of Demographic Information** found that Stockton Borough's population is meant to increase by up to 18,000 by 2030. A shift in different age groups could mean increasing demands on the state for health, welfare, and social care provision as well as greater demand for informal care of older people by their spouses and children. This only goes to show that finances and service provision need to have the best demographic information in order to meet the needs of our customers.

Data sharing protocols will ensure the effective sharing of data across the Council and also possibly with partners whilst a toolkit developed in line with the introduction of the new Council Plan structure for use throughout the Council by officers is meant to provide the data often required for funding bids and thereby make the Council more successful.



Arts, Leisure and Culture Select Committee

The Committee was tasked with gaining a greater understanding of **child poverty** in Stockton and what steps could be taken locally to help address it and mitigate the effects. The Committee focused on the impacts of poverty on children, especially education and health and wellbeing.

At the outset of the Committee's scrutiny review of Child Poverty, the Committee was reminded of the work of George McGonigle who in 1936 published "*Poverty and Public Health*, a groundbreaking empirical study which challenged the Conservative-Liberal political orthodoxy of the time that considered the link between poverty, nutrition and mortality to be the fecklessness of poor mothers who either squandered their money or were too ignorant to provide healthy meals.

His Stockton studies showed clearly that the vast majority of poorer families, whether employed or unemployed, did not have an income that was sufficient to sustain a diet that was adequate to ward off disease and death: poverty, not ignorance, was the cause of morbidity and mortality

amongst the poor and this poverty was not the fault of the individual families but of a society that provided inadequate wages and welfare benefits.” Professor Clare Bamba (2012)

The Committee reflected on the similarities with today. A Joseph Rowntree Foundation report on the 2012/13 poverty statistics painted a bleak picture both for those not working and for those who are poor but in work (for the first time on record, the majority of people in poverty are in working families).

The Committee’s recommendations sought to reduce the prevalence of child poverty through income maximisation and re-prioritisation on prevention and early intervention as well as reducing the impact of poverty on a child’s health and education. In particular, the recommendations seek to support the shift of resources from reaction to prevention and early intervention, in line with the work of the Health and Wellbeing Board and as part of the Council’s strategic approach and financial strategy, ensure Early Help services are aligned and co-ordinated and encourage Stockton Schools to ‘poverty proof’ the school day to help to reduce the impact of child poverty.



Children and Young People Select Committee

The challenge for the Committee in undertaking the **Review of Employment and Education** was to seek to ensure that education and training equips young people with skills that businesses and employers across the Borough need and bring education and business closer together to ensure that learning provision matches local industry need.

The Committee’s findings revealed that locally there is a jobs mismatch. In the Tees Valley, growth areas include digital and creative, advanced manufacturing, health, logistics, processing, and the carbon sector but what is less clear is whether young people are attracted to these sectors. In May 2013, almost 1 in 3 people claiming Job Seekers Allowances in Stockton were aged between 16 and 24 years.

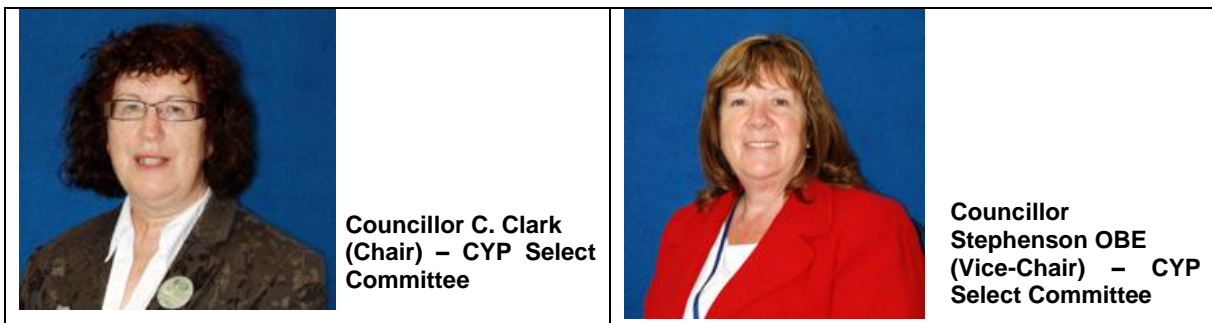
Committee Members visited local businesses, observed careers interventions and targeted activities, and spoke to young people. The visits highlighted young people’s lack of awareness of the opportunities which existed in growth industries and the types of occupations/opportunities within them. There was also a recognition that young people tended not to be prepared for the work environment and needed to learn more about the personal qualities that employers want to see in potential employees.

The Committee’s recommendations sought to provide a framework to achieve greater interaction between local employers, schools and post 16 education and training providers, to ensure there are robust, flexible and sustainable mechanisms to encourage co-operative working between education providers, the Council and industry.

The Committee recommendations seek to:

- Get more employers involved in schools
- Provide young people with impartial independent careers guidance
- Provide more information about the various local industries and employment opportunities

- Develop structured and planned work placement programmes
- Provide more support in getting young people ready for work including help with interview skills



Housing and Community Safety Select Committee

The aim of the **Review of Welfare Reform and Financial Inclusion** examined the effects of welfare reform which was having a big impact on the Borough and many of its residents. The review praised the joint working across Council and partner agencies (including third sector and Registered Providers) to mitigate the effects of welfare changes and support residents in future phases of reform.

Whilst it was too early to see the full effect of the welfare changes on a local level it was clear to the Committee that residents and service providers were having to deal with the impact in various ways. A significant sum of money was removed from the benefit payments to residents of the Borough some having been affected by changes applied retrospectively and in a manner which they have relatively little control over, particularly the under-occupation charge for social housing.

Welfare reforms have coincided with existing financial pressures on many people and Members wanted to do all they could to provide advice and help to improve financial inclusion in the Borough.

Issues about food poverty and the impact and operation of benefit sanctions have risen in prominence over the past year and Members were particularly concerned about the impact on the more vulnerable sections of society.

To assist with this agenda the Committee has made recommendations to ensure greater awareness of the ways to tackle loan sharks, and improve the information provided on access to financial advice.

It was recognised that further scrutiny work should take place during 2014-15 to continue to review the impact of welfare reform. This phase of work should include particular reference to Universal Credit including fraud investigation, food poverty, advice and information, and the local housing market.



Corporate and Social Inclusion Select Committee

The Committee considered the findings of an Independent Review of NEPO and options for the future. The Committee felt that only one option sought to address concerns about accountability, structures, and the focus of NEPO. However, Members felt that they could not fully endorse this option until transition work, including a regional agreement on the categories of spend NEPO will focus on, was completed. The Committee also highlighted the aim that the smaller refocused NEPO would lead to a reduced fee for the Authority.

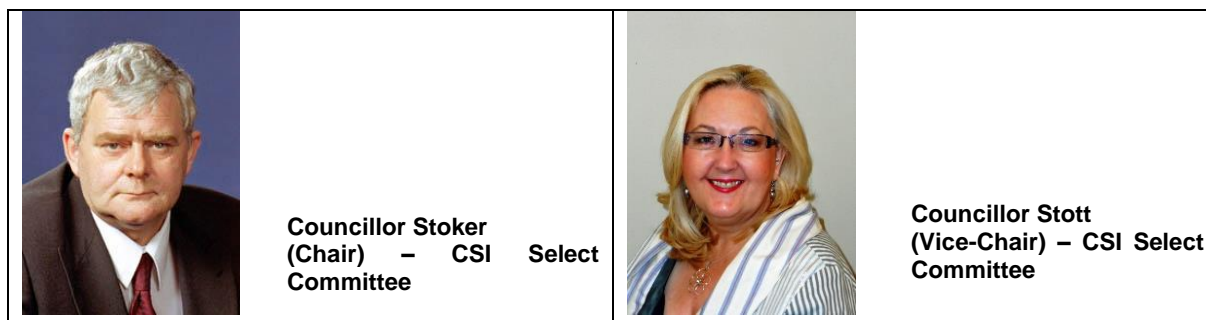
During the review, Members were presented with a summary of categories of goods and services the Council purchases and considered the most appropriate way to procure these, whether at a local level by SBC, sub-regionally by collaborating with the Councils in the Tees Valley, regionally by collaborating with the North East Councils via NEPO or nationally using national contracts. The Committee opted for external third party expenditure to be procured at a regional level

The Committee then began a **Review of Street Café Furniture and Advertising Boards**. The use of A-board advertising by businesses and permitting cafés to have areas of seating on footpaths in the borough town centres have been increasing. The Committee therefore wanted to provide a balance between business encouragement, and the vibrancy it creates in our town centres and any difficulties negotiating items of café furniture, A-Boards and shop goods on the highways for everyone but especially visually impaired people, mobility aid users, and those with pushchairs.

For the Committee Members to fully appreciate the problems encountered by anyone with a visual impairment they undertook a site visit to Yarm before meeting with the Chambers of Trade in the borough along with members of Stockton Council's Disability Advisory Group. The intention was for business owners and affected persons to hear each other's concerns and ideas so that the beginning of a consensual outcome could be identified.

The major issue for both sides was with regard to enforcement and whether this could operate by encouraging businesses to self-enforce and regulate the position of street furniture or whether a licensing policy with enforcement powers was required. Trade Associations supported self-enforcement possibly policing any problems whilst disability representatives felt that a licensing policy without strict enforcement in place might not provide any appreciable improvements.

The Committee is expected to publish its findings during summer 2014.



Other Overview and Scrutiny Activity

REGIONAL and SUB-REGIONAL HEALTH SCRUTINY

Stockton Councillors also sit on the **Tees Valley Joint Health Committee** and the **North East Regional Health Committee**.

These Committees examine services that are commissioned to operate across local authority boundaries such as the ambulance service and specialised services such as heart surgery.

Stockton Council chaired and supported the Tees Valley Committee during 2013-14. Members examined mental health services including rehabilitation and talking therapies, alcohol services, and a key piece of work is the Securing Quality in Health Services project which is setting out the standards that services such as maternity will have to achieve in future to remain high quality.

The Tees Valley Committee hosts an annual review of the planning of the winter period, and is well placed to receive updates from the NHS England Area Team which now covers Durham, Darlington and Tees.

The Regional Committee has focussed on ambulance services, and been updated with the progress of the national review of children's heart surgery.

Approach to Monitoring Quality and Response to Francis Inquiry

In Stockton Council health scrutiny is mainly undertaken by Adult Services and Health Select Committee (ASH). ASH Committee's work programme as with all scrutiny committees at Stockton is mainly based around undertaking in-depth topic based reviews, however in addition the ASH Committee undertake a number of additional roles in relation to health scrutiny, based on statutory duties, good practice, and evolving policy.

The Francis Report into the failings of care at the Mid-Staffordshire NHS Foundation Trust made a number of recommendations aimed directly at health scrutiny functions. It highlighted the quality and frequency of questioning at the local Scrutiny Committee, the sources of information used, and the ability or otherwise to query the messages put forward by senior NHS Trust management. The report suggested that the distinction between 'operational' and 'strategic' matters when discussing the role of the local scrutiny committee(s) and the balance of their work programme is essentially a false one, when all that really matters is the outcomes for patients.

Issues such as Winterbourne View and the standards in care homes also continue to be discussed nationally and the resulting challenge for all local authorities is to ensure that scrutiny is effective, contributing to the oversight of quality issues and adding value in the new NHS and adult care system.

To ensure we have an effective process locally, a revised approach to monitoring the quality of local health and adult care services was developed and endorsed in July 2013.

New Health Scrutiny Regulations

New health scrutiny regulations following the introduction of the Health and Social Care Act 2012 and subsequent amendments to the regulations were agreed by Cabinet on 11 July 2013.

A key benefit of the new regulations is that the scope of health scrutiny has been widened and there is greater power to hold health providers to account; i.e. all relevant health service providers delivering services commissioned by Clinical Commissioning Groups (CCGs),

NHS England or local authorities are now covered by the scope of health scrutiny powers (e.g. the ability to require attendance at a Council meeting). This positive change will facilitate a strategic approach to reviewing the quality of local services.

Fuel Poverty Partnership

In 2012-13 a scrutiny review was carried out by the Environment Select Committee on Affordable Warmth as fuel poverty levels were over 32 per cent in parts of Stockton Borough. Over 10,000 properties were not at a Decent Homes standard, higher costs were incurred for prepayment meters, and over half of the borough's population earned below average annual household income and there was above average take up of benefits.

One of the agreed recommendations was that a Fuel Poverty Partnership be formed to bring together all key stakeholders which would, as part of its remit, monitor the progress of the Stockton-on-Tees Affordable Warmth Strategy and delivery plan and report to all relevant groups and committees. For consistency and profile Councillor Nigel Cooke, Chair of the Environment Select Committee was appointed the Chair of the Fuel Poverty Partnership.

Councillor Cooke was subsequently recognised as the Scrutineer of the Year at the LGIU & CCLA Councillor Achievement Awards on 25 February 2014.

POLICE AND CRIME PANEL

The Police and Crime Panel (PCP) first met on 10 June 2013. Its role is to scrutinise the actions and decisions of the Police and Crime Commissioner (PCC), thereby holding the PCC to account. In addition, the Panel chose to carry out in-depth scrutiny reviews into particular issues or concerns. These may be a policy or performance issue in relation to priorities contained in the Police and Crime Plan.

Stockton Council provide scrutiny and democratic services support to the Police and Crime Panel. During 2013-14 specific support was provided to three reviews. One reported in February 2014 while the others continued into the following Municipal year.

Approach to Budget Task and Finish Group

Although there is a strategy in place to balance the overall budget for 2014-15 and 2015-16 the level of grant reductions has necessitated additional reductions in the numbers of police officers, PCSOs and staff for the Cleveland area, and the Group wanted greater clarity on important issues such as funding for community safety programmes. Forecasts showed significant further work was needed for 2016-17 and beyond. It was forecast that there was a projected budget gap of £11.5m by 2017-18.

The PCC was recommended to:

- give full consideration to the importance of the prevention agenda and the wider benefits of such community safety services and ensure that partners are fully engaged in discussion before decisions are made;
- decide the spending priorities for the majority of the community safety funds for 2014-15 to give certainty to both partners and current providers; and
- lobby the government to express its dissatisfaction and difficulties caused by the timescale of Government spending announcements.

Work in Schools

A working group of the PCP was set up to:

- Identify the range of work by police officers and PCSOs in schools;
- Identify any difference of approach across the 4 LAs; and
- Identify the impact this work is having in the Cleveland area

The working group has met with Police, PCC officers, Community Safety Officers, Head Teachers and School Governors to explore the following issues.

- There was difficulty for police, police community support officers and Community Safety Officers gaining access to schools but when this had been achieved relationships could be developed.
- Schools did not specifically allocate time to the delivery of messages, particularly longer sessions.
- Specific and targeted messages were delivered in schools when they could be planned and it was important that preventative work was undertaken, as this would head off certain problems.
- The loss of resources was an issue in the delivery of work in schools and the extent of this varied between authorities. Some authorities could only undertake reactive work.
- Every authority had a different approach.
- Closure of youth facilities was also affecting dealing with issues.

This review will report in Autumn 2014.

The future of Probation Services

Transforming Rehabilitation: A Strategy for Reform set out changes to the way in which offenders would be rehabilitated. The reforms included:

- New statutory rehabilitation extended to all offenders sentenced to less than 12 months custody;
- A nationwide resettlement service giving most offenders continuous support by one provider from custody into the community;
- A range of new rehabilitation providers;
- New payment incentives;
- A new national public sector probation service.

A task and finish group was set up to undertake work examining changes to the Probation Service that were being developed at a national level.

This review will report in Summer 2014.

Work Programme 2014-15

Select Committee	Topics
Arts, Leisure and Culture	The effects of arts, leisure and culture on wellbeing
Adult Services and Health	Quality of home care services; and Barriers to the take-up of public services by people with learning difficulties
Children and Young People	School Organisation and Admission Arrangements (Phase 1); and The transition from primary to secondary school
Corporate and Social Inclusion	Licensing and Public Health
Environment	Tree Preservation Orders; and Country Park Maintenance
Executive Scrutiny	E-Cigarettes and the policy on smoking in the workplace
Housing and Community Safety	Welfare Reform; and Neighbourhood Policing
Regeneration and Transport	Improve further the standard of roads and footpaths; and Future of Durham Tees Valley Airport

Overview and Scrutiny Team

Officer	Committees
Margaret Waggott – Head of Democratic Services Tel: 01642 527064 Email: margaret.waggott@stockton.gov.uk	<ul style="list-style-type: none"> Executive Scrutiny
Judith Trainer - Team Leader – Scrutiny Tel: 01642 528158 Email: judith.trainer@stockton.gov.uk	<ul style="list-style-type: none"> Children and Young People
Graham Birtle – Scrutiny Officer Tel: 01642 526187 Email: graham.birtle@stockton.gov.uk	<ul style="list-style-type: none"> Corporate and Social Inclusion Environment Regeneration and Transport
Nigel Hart – Team Leader - Democratic Services and Member Development Tel: 01642 526193 Email: nigel.hart@stockton.gov.uk	<ul style="list-style-type: none"> Arts, Leisure and Culture
Peter Mennear – Scrutiny Officer Tel: 01642 528957 Email: peter.mennear@stockton.gov.uk	<ul style="list-style-type: none"> Adult Services and Health Housing and Community Safety